



## INSTRUCTION BULLETIN

No. 340035  
Machine: 800/810  
Published: 6-97/01  
System: SWEEPING

**NOTE: DO NOT DISCARD the Parts List from the Instruction Bulletin. Place the Parts List in the appropriate place in your machine manual for future reference. Retaining the Parts List will make it easier to reorder individual parts and will save you the cost of ordering an entire kit.**

*NOTE: Numbers in parenthesis ( ) are reference numbers for parts listed in Bill of Materials.*

Installation Instructions for Brush Lift Cable Kit number 375539

### **SYNOPSIS / PROBLEM:**

This kit contains the parts needed to replace the side brush lift cable on the model 800/810 sweeper. Please follow step-by-step instructions.

**SPECIAL TOOLS / CONSIDERATIONS:** File, hacksaw, or torch. (to widen slot in frame)

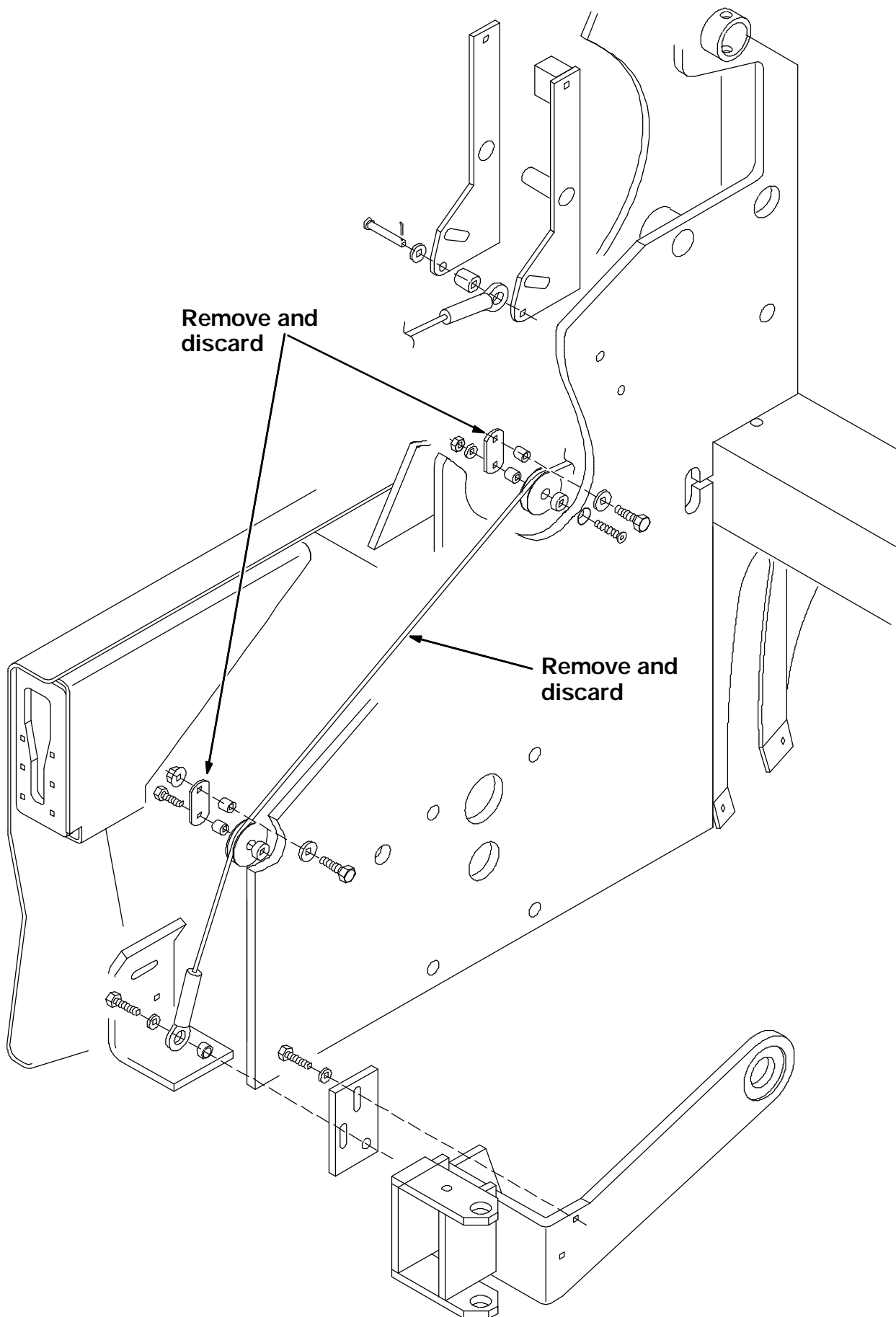
(Estimated time to complete: 2 hours)

### **INSTALLATION:**

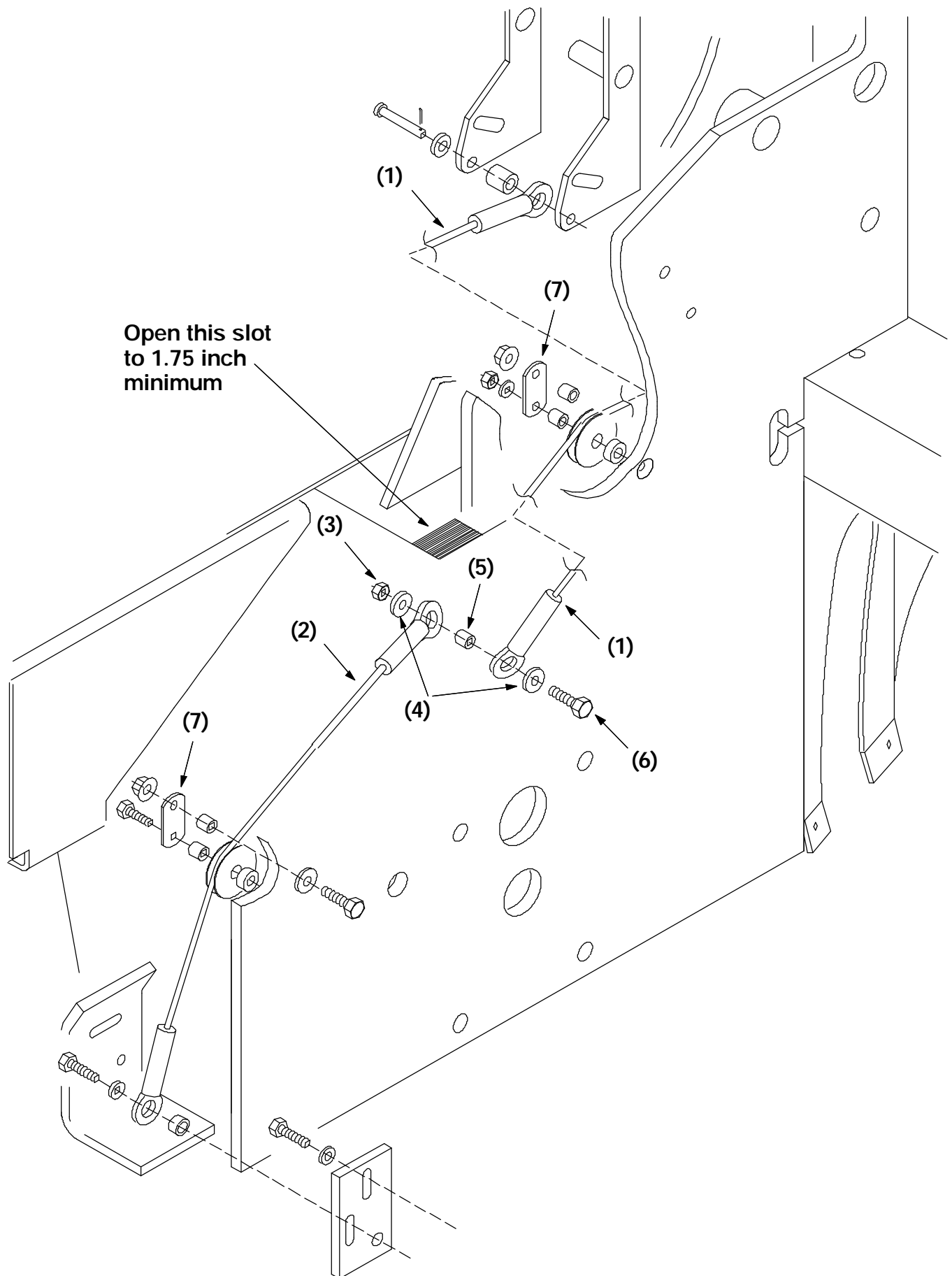
(Refer to FIG. 1)

**FOR SAFETY: Before leaving or servicing machine, stop on level surface and set parking brake. Then turn off machine and remove key.**

1. Raise the hopper and engage the support bar.
2. Lower the side brush.
3. Remove and discard the existing side brush cable (77568) and the two side brush cable pulley plates. (Refer to FIG. 1)
4. The slot in the frame, where the side brush cable goes through, must be widened to a minimum of 1.75 inch. This will allow clearance for the new side brush cable connecting hardware. (Refer to FIG. 1)
5. Install the two new side brush cable pulley plates (7) and the existing pulleys.  
(Refer to FIG. 1)
6. Install the shorter cable (1) on the bracket near the side brush lift cylinder and machine lintel. (Refer to FIG. 1)
7. Install the longer cable (2) on the bracket down at the side brush assembly. (Refer to FIG. 1)
8. Connect the two cables (1 and 2) together near the area of the frame slot. Use the bolt (6), spacer (5), washer (4), and lock nut (3). (Refer to FIG. 1)
9. Start the machine and lower the hopper. Operate the side brush and check for proper operation.



**FIG. 1 - Existing Side Brush Lift Cable Assembly**



**FIG. 2 - New Side Brush Lift Cable Assembly**

**BILL OF MATERIALS FOR SIDE BRUSH LIFT CABLE REPLACEMENT KIT #375539**

<b>Ref.</b>	<b>TENNANT Part No.</b>	<b>Description</b>	<b>Qty.</b>
1	23936	Cable, short	1
2	70532	Cable, long	1
3	32715	Lock nut	1
4	33924	Washer	2
5	65174	Spacer	1
6	09028	Bolt	1
7	79115	Plate	2

TENNANT COMPANY  
P. O. Box 1452  
Minneapolis, MN 55440-1452